

PART OF THE E 1/2, SEC. 32 & THE W 1/2, SEC. 33, T.7N., R.2W., S.L.B. & M.

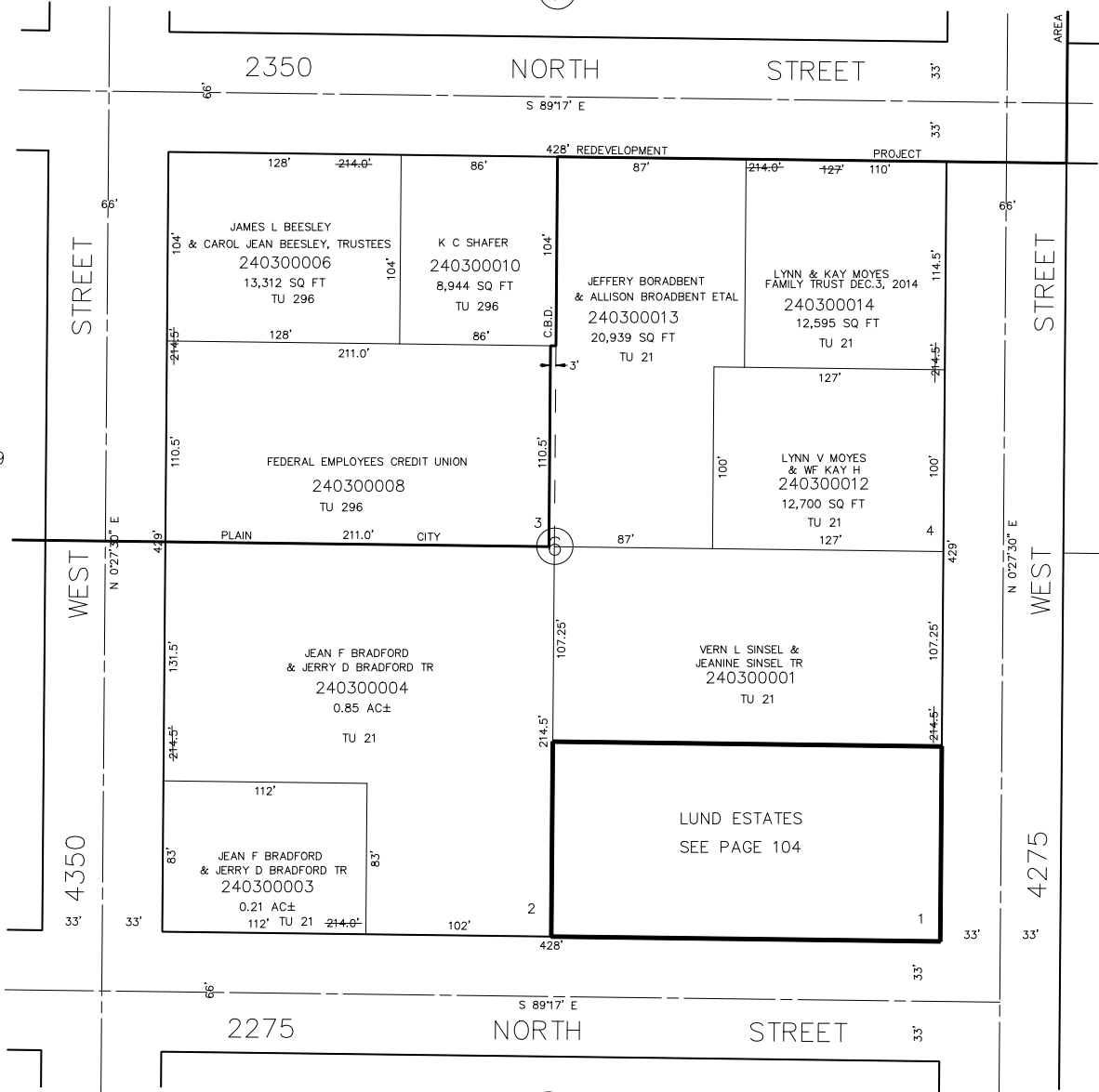
PLAIN CITY
BLOCK 6, PLAT A

TAXING UNIT: 21, 296

SCALE 1" = 50'

SEE PAGE 31

7



SEE PAGE 29

5

SEE PLAT B
PAGE 51

1

SEE PAGE 25

SEE ORIGINAL DEDICATION
PLAT OF PLAIN CITY IN
BOOK 5, PAGE 80 OF RECORDS.